

BIKRAMJEET GOSWAMI MEMORIAL COLLEGE



Affiliated to Sidho-Kanho-Birsha University, Ph. – 9434659514(P), 8348050914(O)
Registered under Section 2(f) & 12(B) of the UGC act, 1956
Email: - bgmcjoypur@gmail.com, Website: bgmcollegejoypur.in
Joypur, Po- Garhjoypur, Dist-purulia, West Bengal, PIN- 723201.

Ref No: 91/BGMC/2023

Date: 02/08/2023

E- Tender Notice (2nd Call)

1. **Bikramjeet Goswami Memorial College**, Joypur, invites percentage rate E-Tender for **Construction of Boundary wall and Main Entrance Gate** at BGM College and looking for interested bidders who have experience in implementing this type of work.

2. Bidders are advised to study all technical and financial aspects, instructions, forms, terms and specifications carefully in the tender document. Failure to furnish all information required in the Tender Document or submission of a bid not substantially responsive to the Tender document in every respect will be at the Bidder's risk and may result in the rejection of the bid.

3. Intending bidder may download the tender documents from the website **<https://wbenders.gov.in>** OR **www.bgmcollegejoypur.in**. **Only Online Submission of Tender will be accepted.** Last date of submission: **18/08/2023 up to 1 PM. Opening Date 21/08/2023, 10 A.M.**

4. Both statutory cover (Technical Bid and Financial Bid) and non-statutory cover are to be submitted concurrently duly digitally signed in the website <http://www.wbenders.gov.in>.

5. Eligibility criteria for participation in tender:

(a) The intending tenderers should produce credentials of a similar nature of completed work of the minimum value of 30% (Thirty percent) of the estimated amount put to tender during 5(five) years prior to the date of issue of the tender notice.

OR

(b) The intending tenderers should produce credentials of 2(two) similar nature of completed works, each should have minimum value of 25% (Twenty five percent) of the estimated amount put to tender during 5(five) years prior to the date of issue of the tender notice.

OR

(c) The intending tenderers should produce credentials of one single running work of similar nature which has been completed to the extent of 75% (Seventy five percent) or more and value of which is not less than the desired value at (a) above. In case of running works, only those tenderers who will submit the certificate of satisfactory running work from the concerned Executive Engineer, or equivalent competent authority will be eligible for the tender. In the required certificate it should be clearly stated that the work is in progress satisfactorily and also that no penal action has been initiated against the executed agency, i.e, the tenderer.

6. The bidder must have valid licence for Civil works, PAN, GST, Trade Licence, Last two years IT return documents.

Terms & Condition:-

1. College Authority reserves the right to reject any or all tenders without assigning any reason whatsoever.
 2. Running bill/ Final Bill payment will be made as per work done against MB prepared by the site engineer.
 3. All damaged or unapproved goods shall be returned at the bidder's risk and cost and the incidental expenditure thereupon shall be recovered from the concerned party.
 4. Payment of bill will be made through by crossed account payee Cheque after delivery and Completion of the project.
 6. Delivery Schedule: The Company shall be able to complete the required work within 90 days of the receipt of order.
 7. Bidder should submit non-refundable tender fees Rs 6000/- (Rupees Six thousand only) by DD in favour of **Principal, Bikramjeet Goswami Memorial College** by hand to the College office and Scan copy of the DD to be upload in the E tender portal.
 7. Bidder should deposit EMD Rs. 65,000/- (Rupees Sixty five thousand) by DD in favour of **Principal, Bikramjeet Goswami Memorial College** by hand to the College office and Scan copy of the DD to be upload in the E tender portal.
- EMD** deposited by the unsuccessful tenders will be **refunded** by way of handing over the original Demand Draft/ Bankers Cheque duly endorsed by the Competent Authority. The Earnest Money of the Successful Tenderer will be adjusted against the Security Deposit.


Principal

Principal
Bikramjeet Goswami Memorial College
Joypur, Purulia

**DETAILED ESTIMATE OR PROBABLE COST FOR THE CONSTRUCTION OF (1260'-0" LENGTH) R.C.C COLUMN FOUNDATION WITH 10" THICK FLY ASH BRICKS WORK INCLUDING BARBED WIRE FENCING BOUNDARY WALL AT B.G.M COLLEGE, JOYPUR. BLOCK - JOYPUR, DIST. - PURULIA (W.B)
ASSUMING 100'-0" LENGTH BOUNDARY WALL.**

Page no Item No	Sl. No.	Description of items	Qty.	Unit	Rate	Amount Rs.-P.
P.No.- (A)-1, It No. - 2(A)	1	Earth work in excavation of foundation trenches or drains, in all sorts of soil (including mixed soil but excluding laterite or sandstone) including removing, spreading or stacking the spoils within a lead of 75 m. as directed. The item includes necessary trimming the sides of trenches, levelling, dressing and ramming the bottom, bailing out water as required complete. Depth of excavation not exceeding 1.5 m.	14.054	m ³	119.27	1,676.22
P.No.- (A)-1 Sl. No. -1, 5th A & C	2	(B) Filling in foundation or plinth by fine sand in layers not exceeding 150 mm as directed and consolidating the same by thorough saturation with water, ramming complete including the cost of supply of sand. (payment to be made on measurement of finished quantity)	1.694	m ³	572.55	969.90
P.No.- (C)-1 Sl. No. - 1 3rd A & C	3	Single Brick Flat Soling of picked jhama bricks including ramming and dressing bed to proper level and filling joints with local sand.	22.227	m ²	266.00	5,912.38
P.No.- (C)-17 It No. - 45 3rd A & C	4	(I) Cement concrete with graded stone ballast (40 mm size excluding shuttering) In ground floor (A) [Pakur Variety] (a) 1:3:6 proportion	1.694	m ³	4604.53 4,732.00	7800.07 8,016.01
P.No.- (A)-2 It No. - 3	5	Earth work in filling in foundation trenches or plinth with good earth, in layers not exceeding 150 mm. including watering and ramming etc. layer by layer complete. With earth obtained from excavation from foundation. (a) With earth obtained from excavation of foundation.	2.811	m ³	77.54	217.96
P.No.(U)-82. Sl. No. - 5 3rd A & C	6	250 mm thick Brick work with Fly Ash Bricks(250mmx125mmx75mm) as per IS 12894:2002 in cement mortar (1:6) (a) For wall in superstructure	10.576	m ³	3,998.00 4192.12	42,282.85 44,335.86
P.No.- (C)-26 Sl. No. -33 3rd A & C	7	Ordinary Cement concrete (mix 1:1.5:3) with graded stone chips (20 mm nominal size) excluding shuttering and reinforcement if any, in ground floor as per relevant IS codes. (i) Pakur Variety	8.119	m ³	5,558.54 5324.82	45,129.79 43,232.21
P.No.- (C)43 Sl. No. -1 10th A & C	8	Reinforcement for reinforced concrete work in all sorts of structures including distribution bars, stirrups, binders etc initial straightening and removal of loose rust (if necessary), cutting to requisite length, hooking and bending to correct shape, placing in proper position and binding with 16 gauge black annealed wire at every intersection, complete as per drawing and direction. (a) For works in foundation, basement and upto roof of ground floor/upto 4 m (i) Tor steel/Mild Steel II. Other than SAIL/ TATA/RINL In Ground floor	0.797	MT	58,753.70 54,375.51	46,826.70 43,337.30
P.No.- (C)-42 It No. -36	9	Hire and labour charges for shuttering with centering and necessary staging upto 4 m using approved stout props and thick hard wood planks of approved thickness with required bracing for concrete slabs, beams and columns, lintels curved or straight including fitting, fixing and striking out after completion of works (upto roof of ground floor) (c) Steel shuttering or 9 to 12 mm thick approved quality ply board shuttering in any concrete work In Ground floor	43.467	m ²	324.00	14,083.31

Dibyendu Adhikary

Dibyendu Adhikary

(D.C.E)

Mansiddanga, Purul

MOB No 13769 07 20-23

[Signature]
16/01/23

Principal

Bikramjeet Goswami Memorial College
Joypur, Purulia

Page no Item No	Sl. No.	Description of items	Qty.	Unit	Rate	Amount Rs.-P.
P.No.- (I)-49 Sl. No. -1, 3rd C & A	10	Plaster (to wall, floor, ceiling etc.) with sand and cement mortar including rounding off or chamfering corners as directed and raking out joints including throating, nosing and drip course, scaffolding/staging where necessary (Ground floor). [Excluding cost of chipping over concrete surface] (ii) With 1:6 cement mortar (b) 20 mm thick plaster Inside	63.452	m ²	149.73 151.00	9500.66 9,581.25
		(c) 15 mm thick plaster Outside	55.741	m ²	132.55 133.00	7388.46 7,413.55
P.No.- (I)-192 It No. -15	11	Neat cement punning about 1.5mm thick in wall, dado, window sill, floor etc. NOTE: Cement 0.152 cu.m per 100 sq.m.	42.153	m ²	34.00 32.76	1,433.20 1,380.93
P.No.- (J)-197 It No. -15	12	Applying decorative cement based paint of approved quality after preparing the surface including scraping the same thoroughly (plastered or concrete surface) as per manufacturer's specification.	119.194	m ²	34.00	4,052.60
P.No.- (O)-219 It No. -2	13	(a) Supplying, fitting galvanised 3 py 12 gauge / 4 points line of barbed wire in fencing (holes already made in the body of the post) or fixed by staples tightening and fixing the wires in taut condition with straining bolts including the cost of cutting and of lapping joints in the wire as necessary but excluding the cost of galvanised staples, straining bolt and binding wire where necessary.	152.400	Mtr	27.68	4,218.43
P.No.- (K)-200 It No. -1	14	(a) Priming one coat on steel or other metal surface with synthetic oil bound primer of approved quality including smoothening surfaces by sand papering etc.	18.116	m ²	29.00	525.36
P.No.- (K)-200 It No. -2	15	(A) Painting with best quality synthetic enamel paint of approved make and brand including smoothening surface by sand papering etc. including using of approved putty etc. on the surface, if necessary : (b) On steel or other metal surface : With super gloss (hi-gloss) - (iv) Two coats (with any shade except white)	18.116	m ²	79.00	1,431.16
Cost For Building Works					193,770.68	1,90,062.81
Cost for 100'-0" length of boundary wall (Say)					193,770.68	
Such as Cost for 1260'-0" length of boundary wall					2,441,510.56	
Add : GST @ 18%					439,471.90	
Cost of Civil Works excluding Labour Welfare Cess					2,880,982.46	
Add : Labour Welfare Cess @ 1%					28,809.82	
Total Cost of Civil Works including Labour Welfare Cess					2,909,792.29	
Say					2,909,792.00	
Amount In Words					Rupees Twenty Nine Lakhs-Nine-Thousand & Seven-Hundred-Ninety-Two Only	

Cost for 100 feet length of Boundary wall = Rs. 1,90,062.81

Dibyendu Adhikary:

Dibyendu Adhikary
(D.C.E.)

Mansiffdanga, Purulia

P.M.T. Lic No. 13769 of 20-23

[Signature]
16/07/23
Principal

Bikramjeet Goswami Memorial College
Joypur, Purulia

Such as cost for 1260 feet length of boundary wall

$$= \frac{1260}{100} \times 1,90,062.81 = 23,94,791.40$$

Add GST @ 18% - - - - - Rs. 4,31,062.45

Total Rs. 28,25,853.85

Add L/W Cess @ 1% + Rs. 28,258.53

Rates Vetted Total Rs. 28,54,112.39

Say Rs. 28,54,112.00.

[Signature]
09/03/23
Estimator

Purulia Division
Social Sector, P.W.Dte

Executive Engineer
Purulia Division
Social Sector, P.W.Dte.

Analysis of Rate

Rate of Ordinary cement concrete (mix 1:1.5:3) with graded stone chips (20 mm nominal size) excluding shuttering and reinforcement if any, in ground floor as per relevant IS codes.
i) Pakur variety. >>> Pakur variety. >> For site at Joypur, Purulia (25) km.

Step 1. A	Rate of item as per Schedule		4178.00	
			Aggregate	
	Description		20 mm Nominal size	10 mm Nominal size
Step 2. B	Cost of stone Aggregate		1264.00	1133.00 ✓
Step 3. C	Cost of Carriage of stone Aggregate			
	i) Distance upto 5Km.		124.00	124.00 ✓
	ii) Distance Above 5 Km. Upto 10 Km.(Per Km.) @ Rs.- 10.90/Km.		54.50	54.50 ✓
	ii) Distance Above 10 Km. Upto 20 Km.(Per Km.) @ Rs.- 10.10/Km.		101.00	101.00 ✓
	iii) Distance Above 20 Km. Upto 25Km.(Per Km.) @ Rs.- 9.50/Km.		47.50	47.50 ✓
	iv) Distance Above 50 Km. Upto 100 Km.(Per Km.) @ Rs.- 8.40/Km.		0.00	0.00 ✓
Step 4. D	Cost for loading and unloading of Stone Aggregate		58.00	58.00 ✓
	Total		1649.00	1518.00 ✓
E.	For 20 mm. stone aggregate =	0.573x1649.00=	944.88 /	
F.	For 10 mm. stone aggregate =	0.287x1518.00=	435.67 /	
	Cost of concrete of 1 cu.m. at s.te = (A+ E + F)		5558.54 /	

Rate Analysis for contractor supply

Quantity (MT)	Schedule Rate	Issue Rate	Basic Price	Modified Rate
0.4086	5558.54	6289.00	5717.00	5324.82 ✓

Note:

Modified Rate(Cement supplied by Contractor)

= Schedule Rate-(Qty. of cement x Issue Rate)+(Qty. Of cementx Basic Price) ✓

Checked
09/03/23
Purulia Division
Social Sector, P.W.Dte

09/03/23
Executive Engineer
Purulia Division
Social Sector, P.W.Dte.

**Analysis of Rate for Reinforcement Steel Supplied by Contractor
[JSW/JSP/SHYAM/SRMB/BMASL /ELECTROSTEEL/SSL] For
B.G.M. College, Joypur, Purulia.**

This calculation is done as per Format-B of P.W.D. Schedule of Rates for Building Works Materials & Labour.
Issue Rate of Steel = Rs. 42792.00/M. T. [vide column 4 of Item No. 2 (ii)]
Basic Price = Rs. 37844.00/M. T. [vide column 5 of Item No. 2 (ii)]
Total lead = 5 km [Distance]

- A. Reinforcement for R.C. work in all sorts of Structure [vide P-43 / Item-40a(i)] = (+) Rs. 60003.00/M. T. ✓
B. Deduct: Issue Rate x 1.17 = Rs. 42792.00 x 1.17 = (-) Rs. 50066.64.00/M. T. ✓
C. Add: Basic price of outlet of Steel x 1.17 = Rs. 37844.00 x 1.17 = (+) Rs. 44277.48/M. T. ✓

Calculation for cost of Carriage and Loading unloading for 1 M. T. of Steel
a. Carriage cost

- (i) Up to 5 km = Rs.82.00/M. T. ✓
b. L/Unloading without staking = 75% x Rs. 96.00 = Rs.72.00/M. T. ✓
Total Cost for 1 M. T. = Rs. 154/M. T. ✓

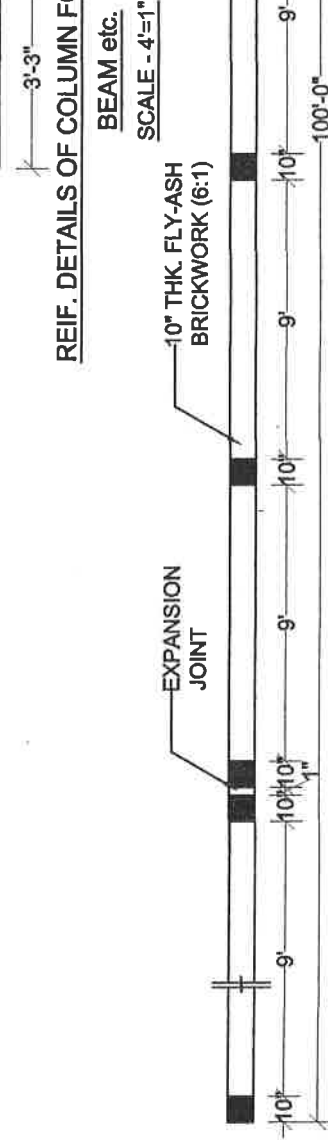
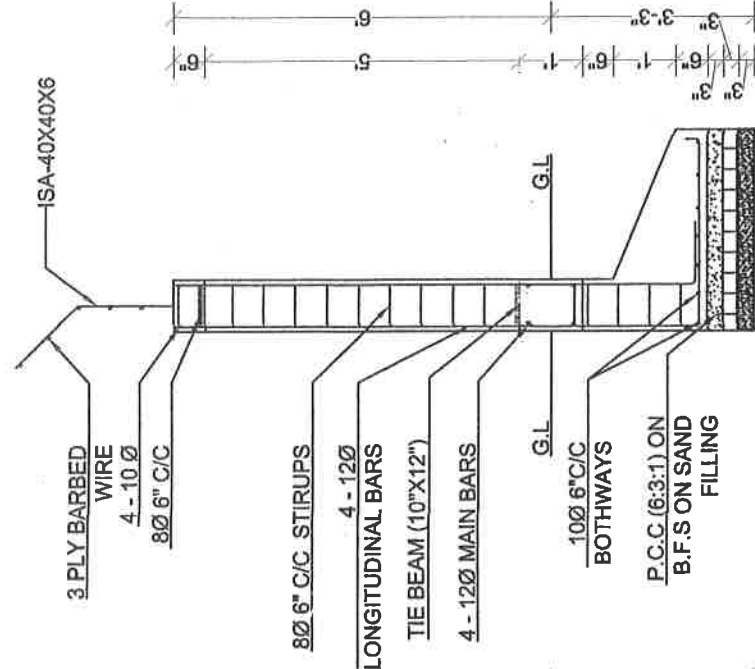
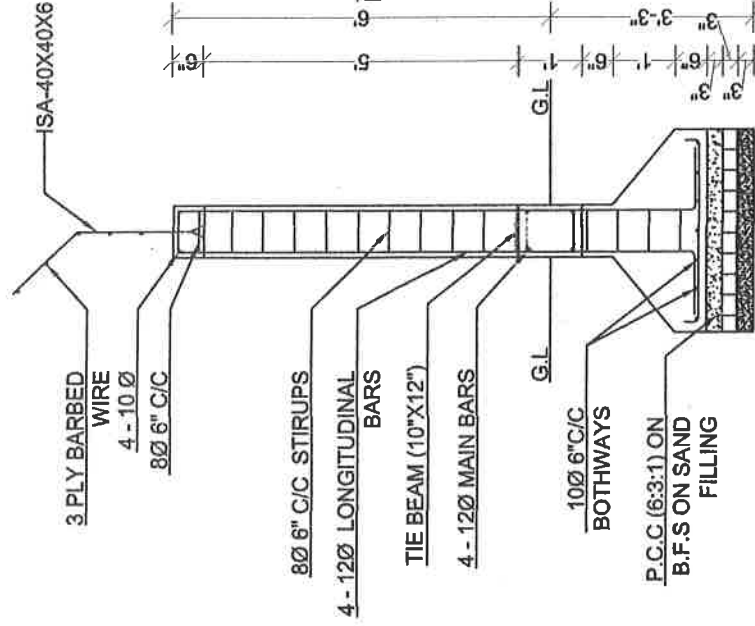
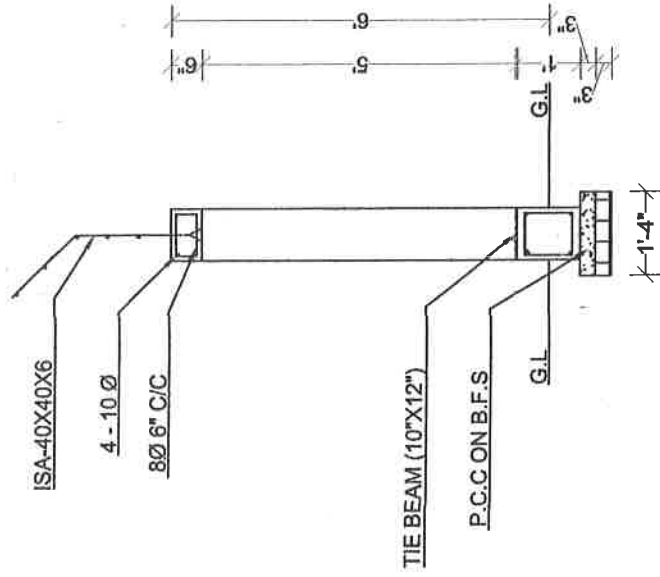
- D. Add: Cost of carriage from out let to work site with necessary Loading /unloading excluding staking
as per P.W.(Roads) Schedule for 1.05 M.T. = Rs. 154 x 1.05 = (+) Rs. 161.7/M. T. ✓

$$\text{Final Rate of Item} = A - B + C + D = \text{Rs. } 60003 - 50066.64 + 44277.48 + 161.7$$

$$\text{For ground floor} = \text{Rs. } 54375.54/\text{M. T.}$$

checked
09/03/23
Purulia Division
Social Sector, P.W.Die

09/03/23
Executive Engineer
Purulia Division
Social Sector, P.W.Die.



REIF. DETAILS OF COLUMN FOUNDATION & TIE BEAM etc.

REIF. DETAILS OF ECENTRIC COLUMN FOUNDATION & TIE BEAM etc.

PLAN OF 1260'-0" LENGTH R.C.C COLUMN FOUNDATION WITH 10" THICK FLY ASH BRICKS WORK INCLUDING BARBED WIRE FENCING BOUNDARY WALL AT B.G.M COLLEGE, JOYPUR. BLOCK - JOYPUR. DIST. - PURULIA (W.B)

NOTE - AFTER EVERY 50'-0" INTERVAL AN EXPANSION JOINT TO BE PROVIDED.

DRAWN BY

Signature
16/04/23

Principal
Bikramjeet Goswami Memorial College
Joypur, Purulia

SIGNATURE OF THE AUTHORITY

Signature
Dibyendu Adhikary

JOYENDU ADHIKARY
DCE
UNIVERSITY OF PURULIA
P.O. BOX 1234
PURULIA - 723 101

13769 of 20-23

DETAILED ESTIMATE & PROBABLE COST FOR THE CONSTRUCTION OF PROPOSED MAIN ENTRANCE GATE WITH SMALL GATE OF CAMPUS BOUNDARY OF B.G.M COLLEGE, JOYPUR, BLOCK - JOYPUR, DIST. - PURULIA (W.B)

Page no Item No	Sl. No.	Description of items	Qty.	Unit	Rate	Amount Rs.-P.
P.No.- (A)-1, It No. - 2(A)	1	Earth work in excavation of foundation trenches or drains, in all sorts of soil (including mixed soil but excluding laterite or sandstone) including removing, spreading or stacking the spoils within a lead of 75 m. as directed. The item includes necessary trimming the sides of trenches, levelling, dressing and ramming the bottom, bailing out water as required complete. Depth of excavation not exceeding 1.5 m.	13.580	m3	119.27	1,619.69
P.No.- (A)-1 Sl. No. - 1, 5th A & C	2	(B) Filling in foundation or plinth by fine sand in layers not exceeding 150 mm as directed and consolidating the same by thorough saturation with water, ramming complete including the cost of supply of sand. (payment to be made on measurement of finished quantity)	0.530	m3	572.55	303.45
P.No.- (C)-1 Sl. No. - 1 3rd A & C	3	Single Brick Flat Soling of picked jhama bricks including ramming and dressing bed to proper level and filling joints with local sand.	56.480	m2	266.00	15,023.68
P.No.- (C)-17 It No. - 45 3rd A & C	4	(I) Cement concrete with graded stone ballast (40 mm size excluding shuttering) In ground floor (A) [Pakur Variety] (a) 1:3:6 proportion	4.300	m3	4,732.00	20,347.60
P.No.- (A)-2 It No. - 3	5	Earth work in filling in foundation trenches or plinth with good earth, in layers not exceeding 150 mm. including watering and ramming etc. layer by layer complete. With earth obtained from excavation from foundation. (a) With earth obtained from excavation of foundation.	2.710	m3	77.54	210.13
P.No.- (C)-12 Sl. No. -33 3rd A & C	6	Ordinary Cement concrete (mix 1:1.5:3) with graded stone chips (20 mm nominal size) excluding shuttering and reinforcement, if any, in ground floor as per relevant IS codes. (i) Pakur Variety	8.910	m3	5,324.82	47,444.15
P.No.- (C)43 Sl. No. -1 10th A & C	7	Reinforcement for reinforced concrete work in all sorts of structures including distribution bars, stirrups, binders etc initial straightening and removal of loose rust (if necessary), cutting to requisite length, hooking and bending to correct shape, placing in proper position and binding with 16 gauge black annealed wire at every intersection, complete as per drawing and direction. (a) For works in foundation, basement and upto roof of ground floor/upto 4 m (i) Tor steel/Mild Steel II.[JSW/JSPL/SHYAM/BMASL/ELECRSTEEL/SSL] In Ground floor	0.874	MT	54,375.54	47,524.22
P.No.- (C)-42 It No. -36	8	Hire and labour charges for shuttering with centering and necessary staging upto 4 m using approved stout props and thick hard wood planks of approved thickness with required bracing for concrete slabs, beams and columns, lintels curved or straight including fitting, fixing and striking out after completion of works (upto roof of ground floor) (c) Steel shuttering or 9 to 12 mm thick approved quality ply board shuttering in any concrete work In Ground floor	51.260	m2	324.00	16,608.24
P.No.- (F)105 Sl. No. -16	9	M.S. gate of Jail type as per approved design made of strong M.S. frame work, intermediate stiffeners and round / square bars or angles. M.S. sheet (not less than 14 gauge) gussets, cleats etc. including necessary riveting, bolting, welding, locking and hanging arrangements, fitting and fixing complete as per direction of the Engineer-in-charge.	5.130	Qntl.	10,090.00	51,761.70
P.No.- (I)-49 Sl. No. -1, 3rd C & A	10	Plaster (to wall, floor, ceiling etc.) with sand and cement mortar including rounding off or chamfering corners as directed and raking out joints including throating, nosing and drip course, scaffolding/staging where necessary (Ground floor). [Excluding cost of chipping over concrete surface] (ii) With 1:4 cement mortar (c) 10 mm thick plaster	53.550	m2	122.00	6,533.10

Dibyendu Adhikary:

Dibyendu Adhikary
(D.C.E)

arsiffdanga, Puruli

B.M.T. Lic.No 13769 of 20-23

Page no Item No	Sl. No.	Description of items	Qty.	Unit	Rate	Amount Rs.-P.
P.No.- (G)-140 It No. -4	11	Applying Exterior grade Acrylic primer of approved quality and brand on plastered or concrete surface old or new surface to receive decorative textured (matt finish) or smooth finish acrylic exterior emulsion paint including scraping and preparing the surface throughly, complete as per manufacturer's specification and as per direction of the EIC.	106.539	m2	31.40	3,345.32
P.No.- (G)-114 It No. -1	12	Protective and Decorative Acrylic exterior emulsion paint of approved quality, as per manufacturer's specification and as per direction of Engineer-in-Charge to be applied over acrylic primer as required. The rate includes cost of material, labour, scaffolding and all incidental charges but excluding the cost of primer.	106.539	m2	67.00	7,138.11
P.No.- (K)-200 It No. -1	13	(a) Priming one coat on steel or other metal surface with synthetic oil bound primer of approved quality including smoothening surfaces by sand papering etc.	48.068	m2	29.00	1,393.97
P.No.- (K)-200 It No. -2	14	(A) Painting with best quality synthetic enamel paint of approved make and brand including smoothening surface by sand papering etc. including using of approved putty etc. on the surface, if necessary : (b) On steel or other metal surface : With super gloss (hi-gloss) - (iv) Two coats (with any shade except white)	48.068	m2	79.00	3,797.37
Cost For Building Works			2,23,050.74			
Sub-Total Cost			2,23,050.74			
Add : GST @ 18%			40,149.13			
Cost of Civil Works excluding Labour Welfare Cess			2,63,199.87			
Add : Labour Welfare Cess @ 1%			2,632.00			
Total Cost of Civil Works including Labour Welfare Cess			2,65,831.87			
Say			2,66,832.00			
Amount In Words			Rupees Two Lakh Sixty Six Thousand Eight Hundred & Thirty Two Only			

Dibyendu Adhikary:

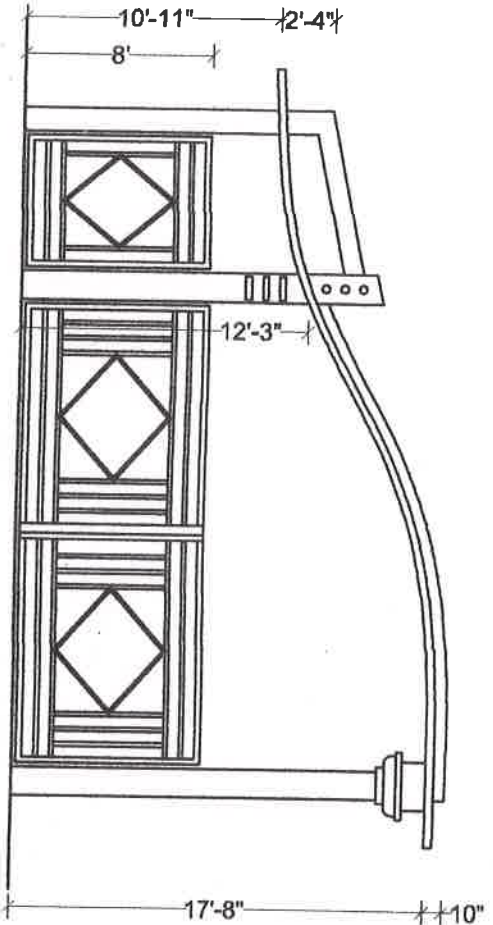
Dibyendu Adhikary
(D.C.E)

Munsiffdanga, Purulia

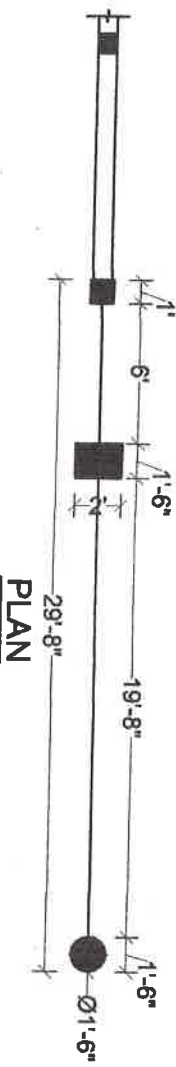
P.M.T. Lic.No 13769 of 20-23

 16/04/23

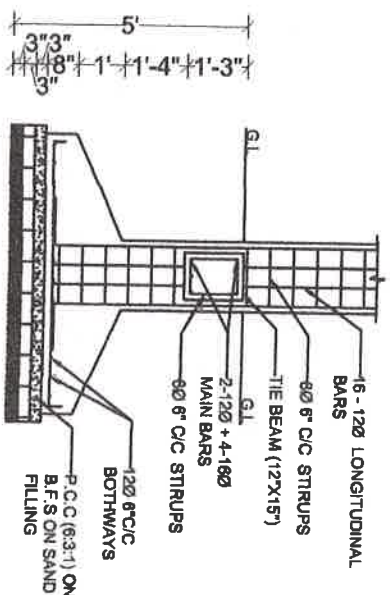
Principal
Bikramjeet Goswami Memorial College
Joypur, Purulia



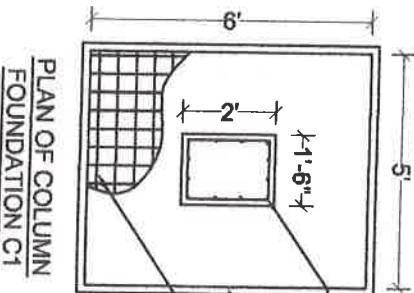
ELEVATION



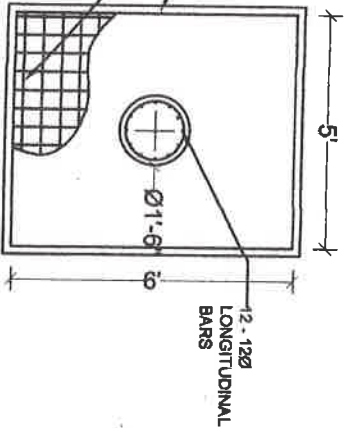
PLAN



TYP. CROSS-SECTION OF FOUNDATION OF COLUMN C1, C2



PLAN OF COLUMN FOUNDATION C1



PLAN OF COLUMN FOUNDATION C2

PLAN OF CAMPUS BOUNDARY MAIN ENTRANCE GATE OF B.G.M COLLEGE, JOYPUR. BLOCK - JOYPUR, DIST. - PURULIA (W.B)

Signature
Principal
Bikramjeet Goswami Memorial College
SIGNATURE OF THE AUTHORITY

DRAWN BY
Dibyendu Adhikary
Civil Engineer (LBS-I)
T. No :- PM/LBS-I/16637
Munsifdanga, Purulia (W.B.)

TOTAL ABSTRACT OF COST

- A) Cost of 1260' 0" Length Boundary Wall..... Rs. 2854112.00
B) Cost of Main Entrance Gate with Small Gate of Boundary Wall ... Rs. 266832.00

Total Rs. 3120944.00
(Rupees Thirty One Lakh twenty Thousand Nine Hundred Forty Four Only)

Dibyendu Adhikary

Dibyendu Adhikary

CIVIL ENGINEER (LBS-I)

T. Lic. No :- PM/LBS-I/16637 of 1369 of 20-23
Munsifdanga, Purulia (W.B.)

Bikramjeet
16/07/23

Principal
Bikramjeet Goswami Memorial College
Joypur, Purulia